



The Dell Performance 2019

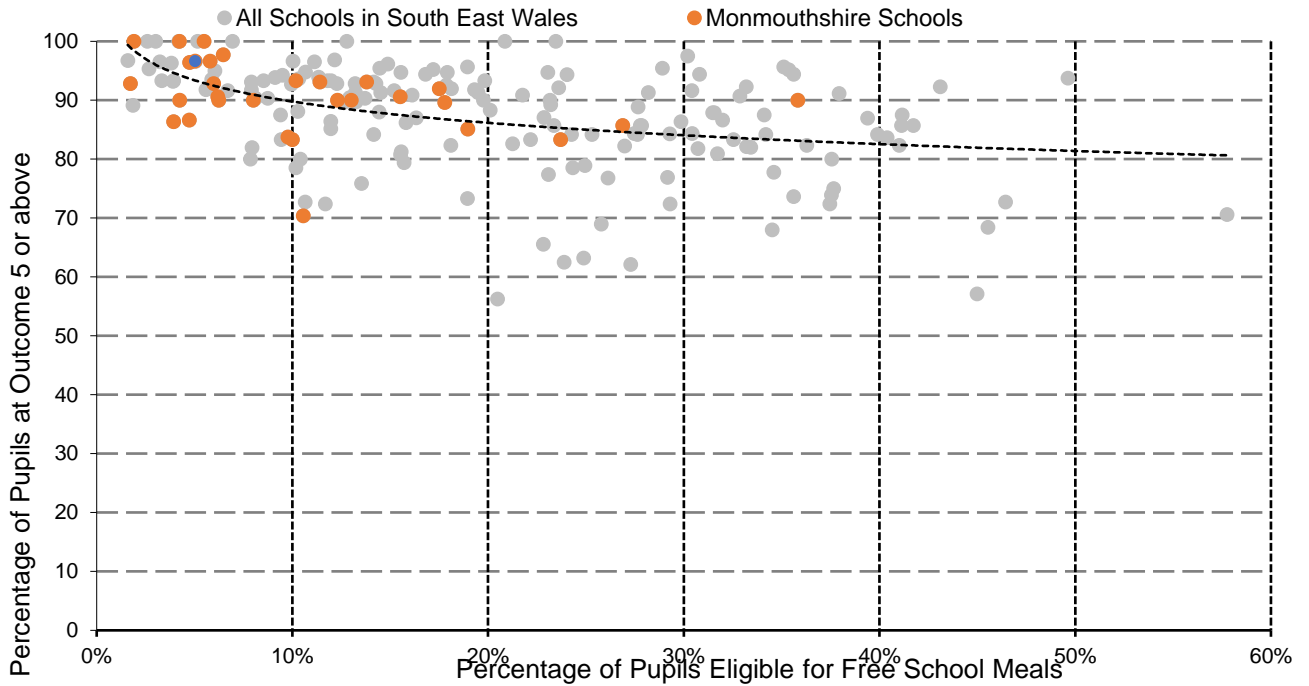
(Compared to all primary schools in EAS Region & Monmouthshire)

Foundation Phase

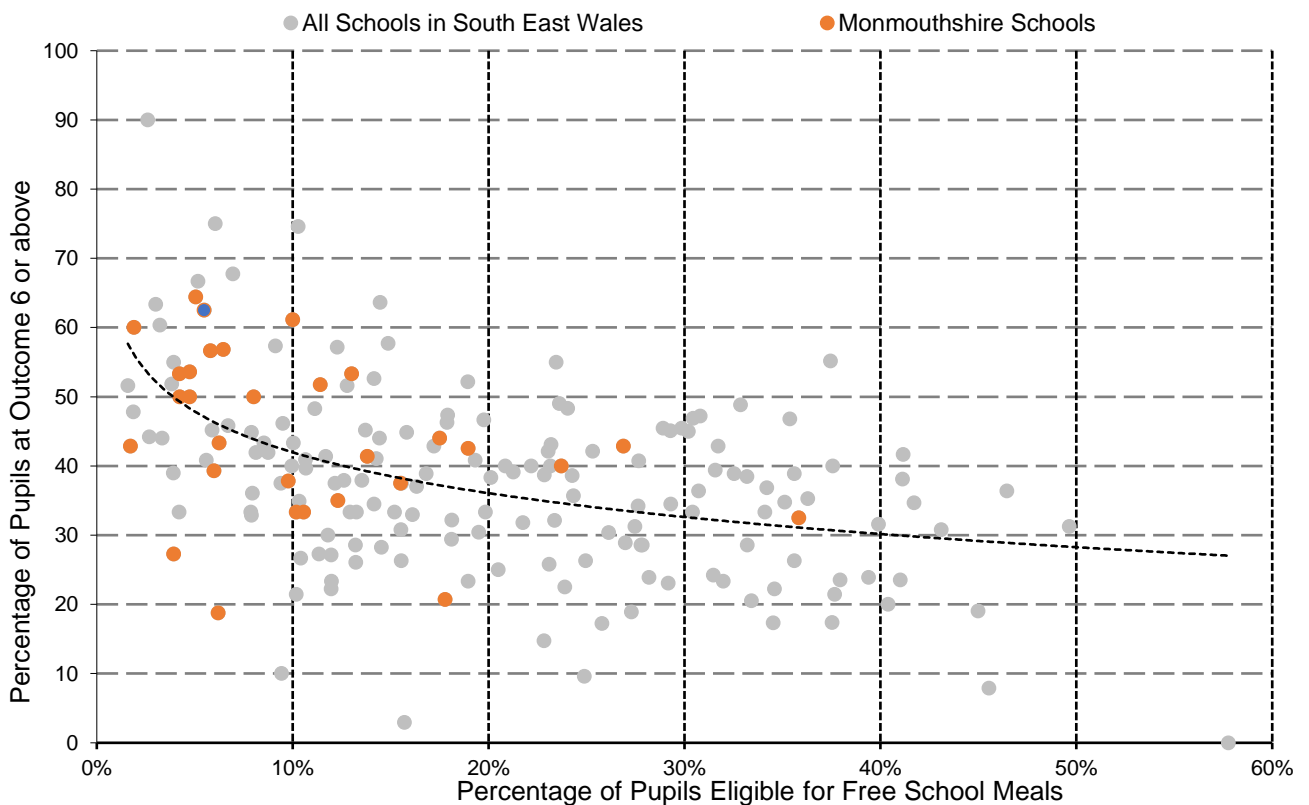


Language, Literacy and Communication (LLC) – English

Percentage of pupils achieving Outcome 5+



Percentage of pupils achieving Outcome 6+



Foundation Phase - Language, Literacy and Communication (LLC) – English Summary

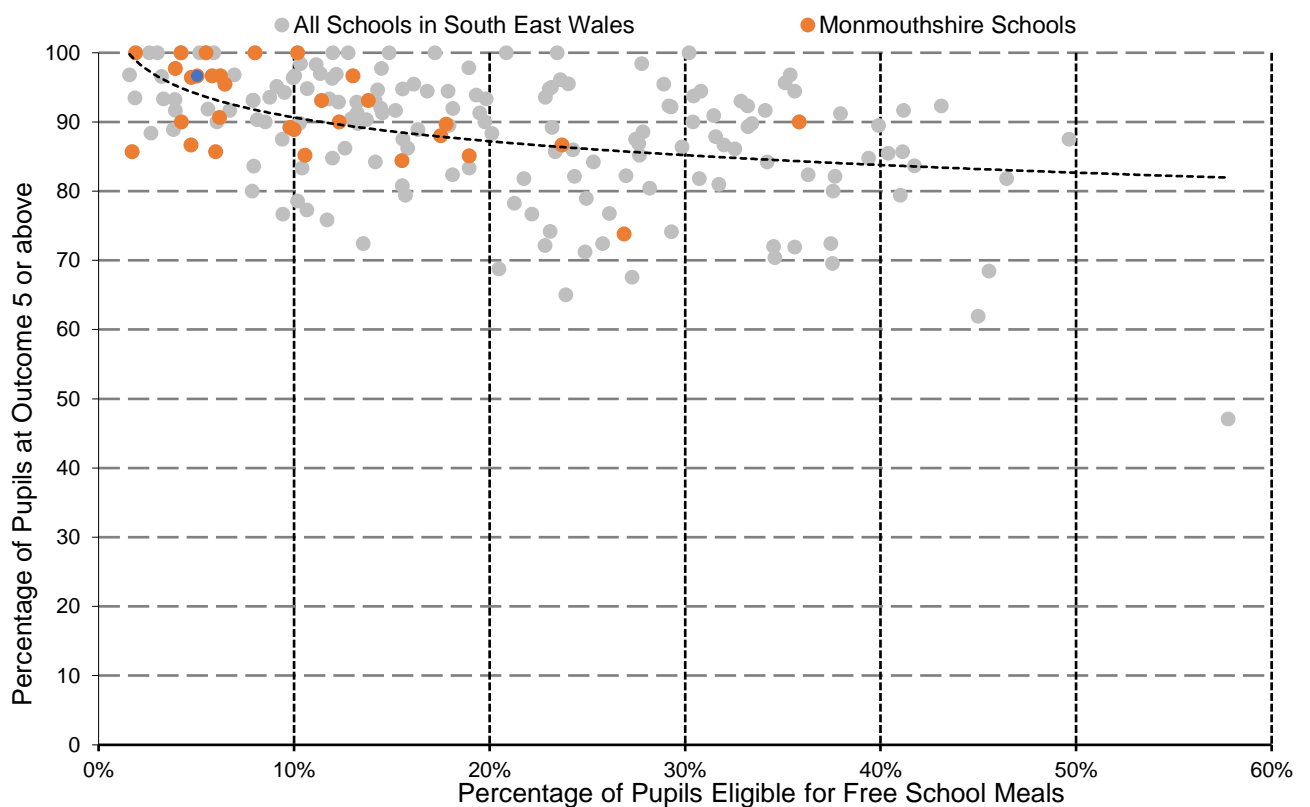
(ALL MONMOUTHSHIRE SCHOOLS)

Please note these charts include both English and Welsh Medium schools, as either LLC-English is assessed.

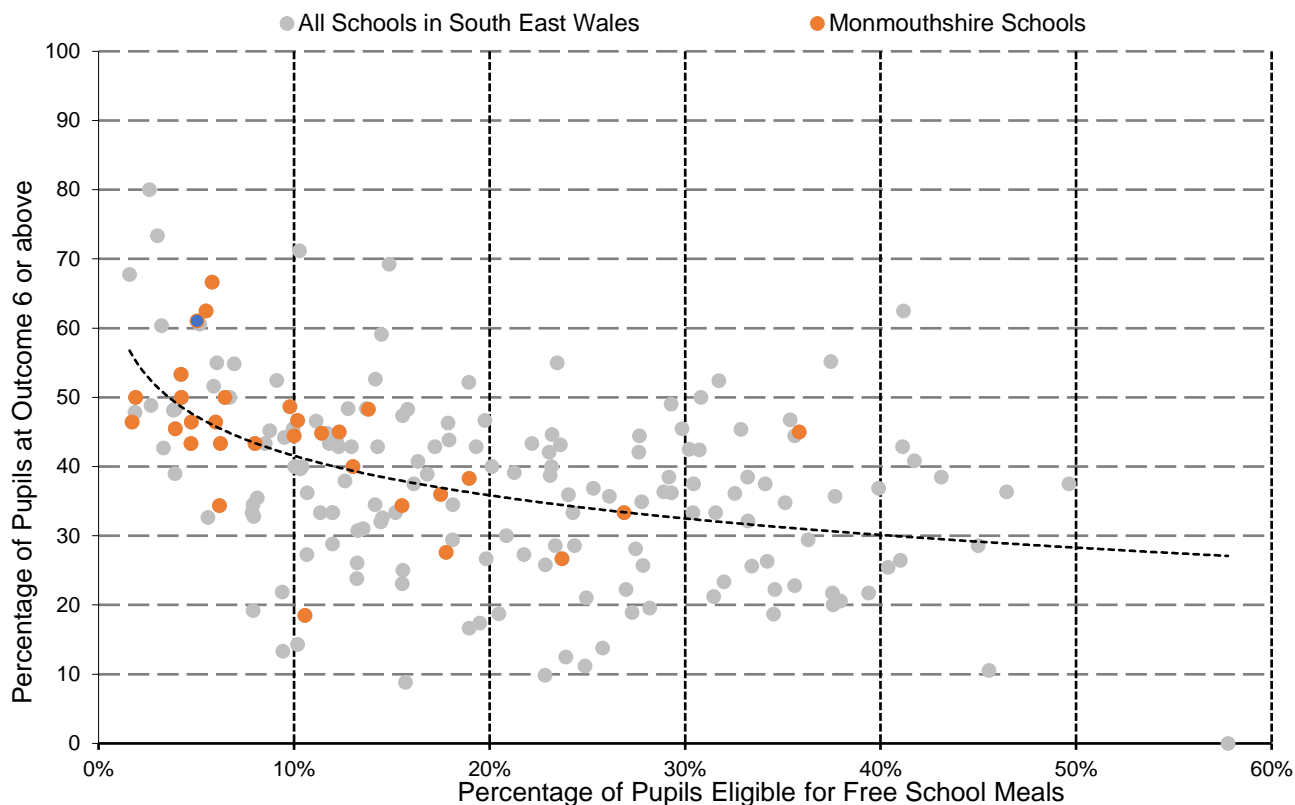
- Overall performance at Outcome 5+ (O5+) is slightly above the region as a whole.
 - For Monmouthshire schools that are relatively more disadvantaged (>20% FSM), there are very few schools below expectation.
 - There is one school with 10% FSM where attainment is 10% or more less than expectation.
-
- Overall performance at Outcome 6+ (O6+) is in-line with the region as a whole.
 - Variability in individual school performance increases significantly at O6+, but this is in line with variability across the region as a whole.
 - There are schools, with FSM in the range 0-20%, where performance is significantly below expectation.

Foundation Phase - Mathematical Development (MD)

Percentage of pupils achieving Outcome 5+



Percentage of pupils achieving Outcome 6+



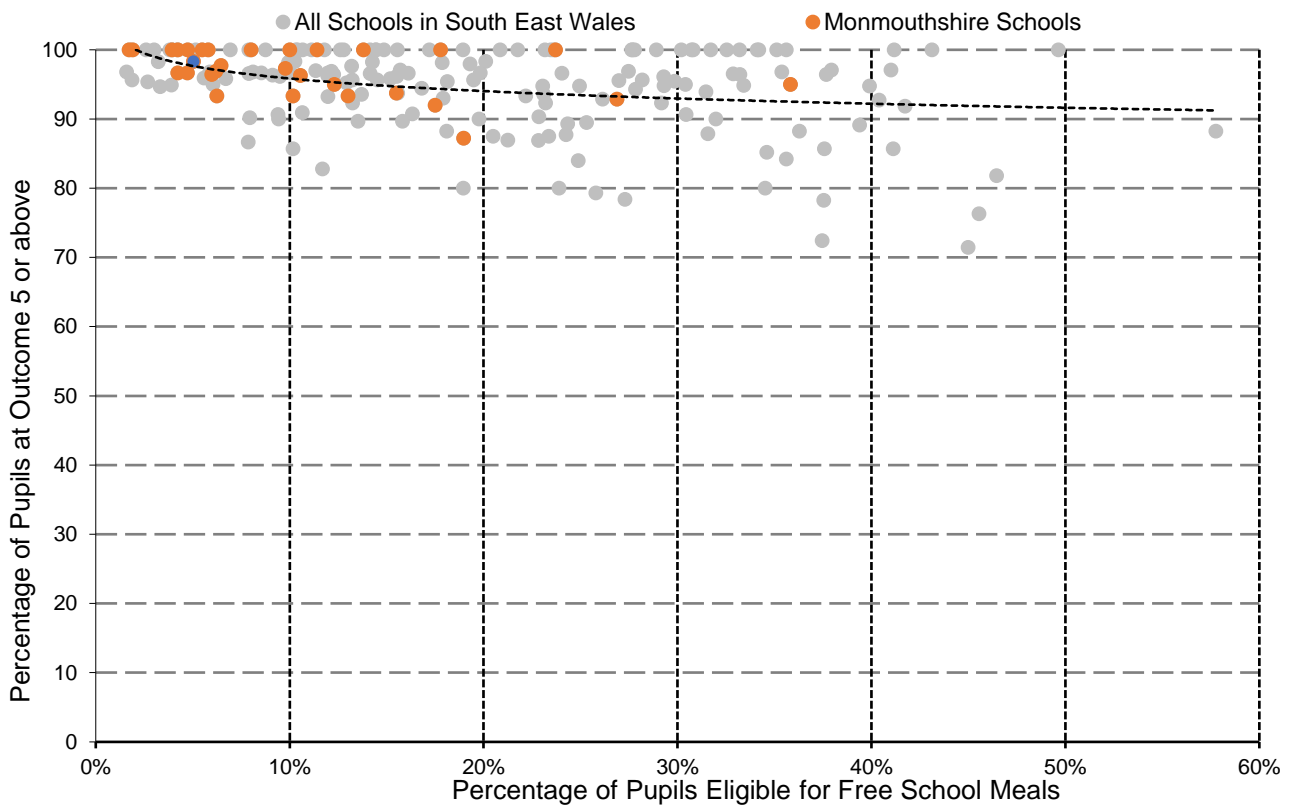
Foundation Phase - Mathematical Development (MD) – Summary Analysis

(ALL MONMOUTHSHIRE SCHOOLS)

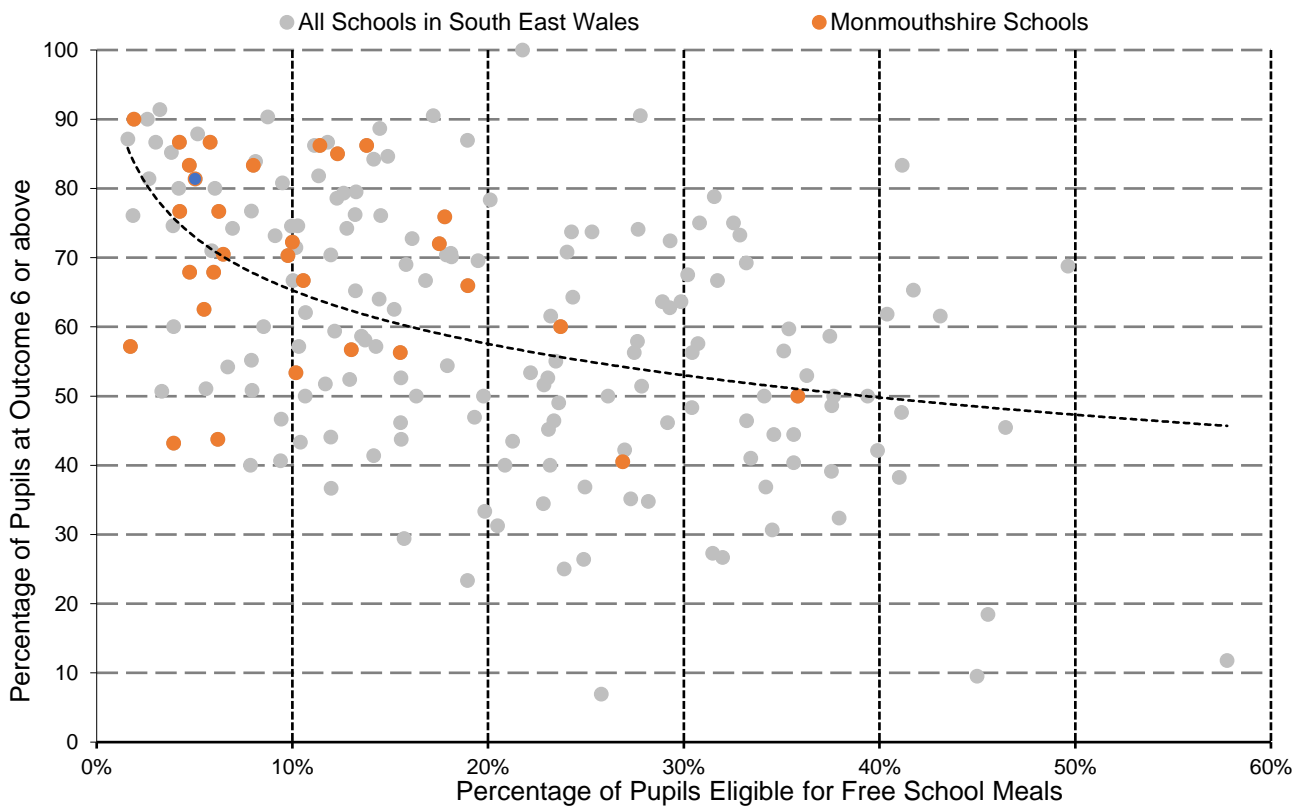
- Overall performance at Outcome 5+ is slightly above the region as a whole, particularly for less disadvantaged schools.
- There is one school in the 20-30% FSM range where attainment is 10% or more less than expectation.
- Overall performance at Outcome 6+ is in-line with the region as a whole.
- Variability in individual school performance increases at O6+, but this variability is less than the variability across the region as a whole.
- There are however 4 schools, with FSM in the range 0-25%, where performance is below expectation, one significantly.

Foundation Phase - Personal and social development, wellbeing and cultural development (PSD)

Percentage of pupils achieving Outcome 5+



Percentage of pupils achieving Outcome 6+

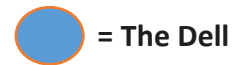


Foundation Phase - Personal and social development, wellbeing and cultural development (PSD) – Summary Analysis

(ALL MONMOUTHSHIRE SCHOOLS)

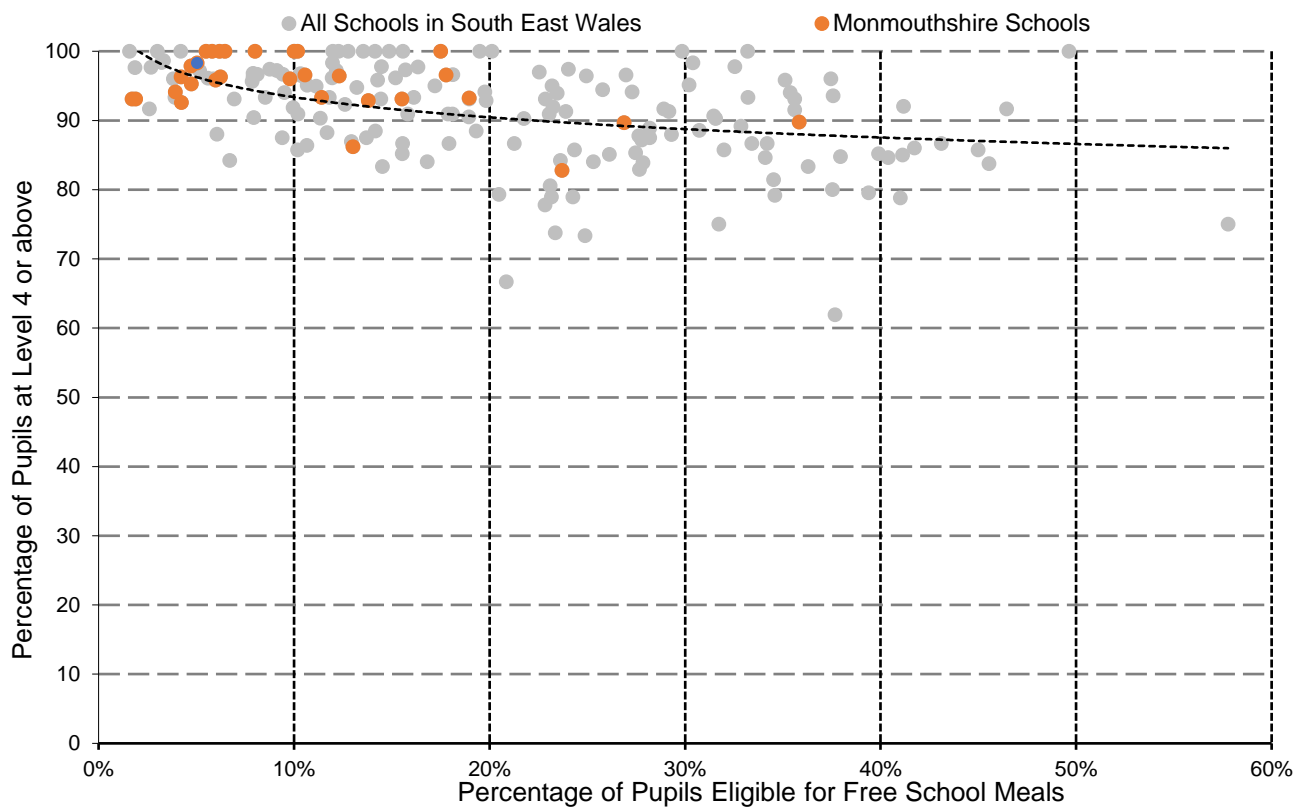
- Overall performance at Outcome 5+ is well above the region as a whole.
- There are more schools than expected where 100% of learners achieve Outcome 5+
- Overall performance at Outcome 6+ is also above the region as a whole.
- Performance at Outcome 6+ is significantly more variable, but this variability is in line with the region as a whole.
- There are however a number of schools, particularly in the range of 0-20% where performance is significantly below expectation.

Foundation Phase

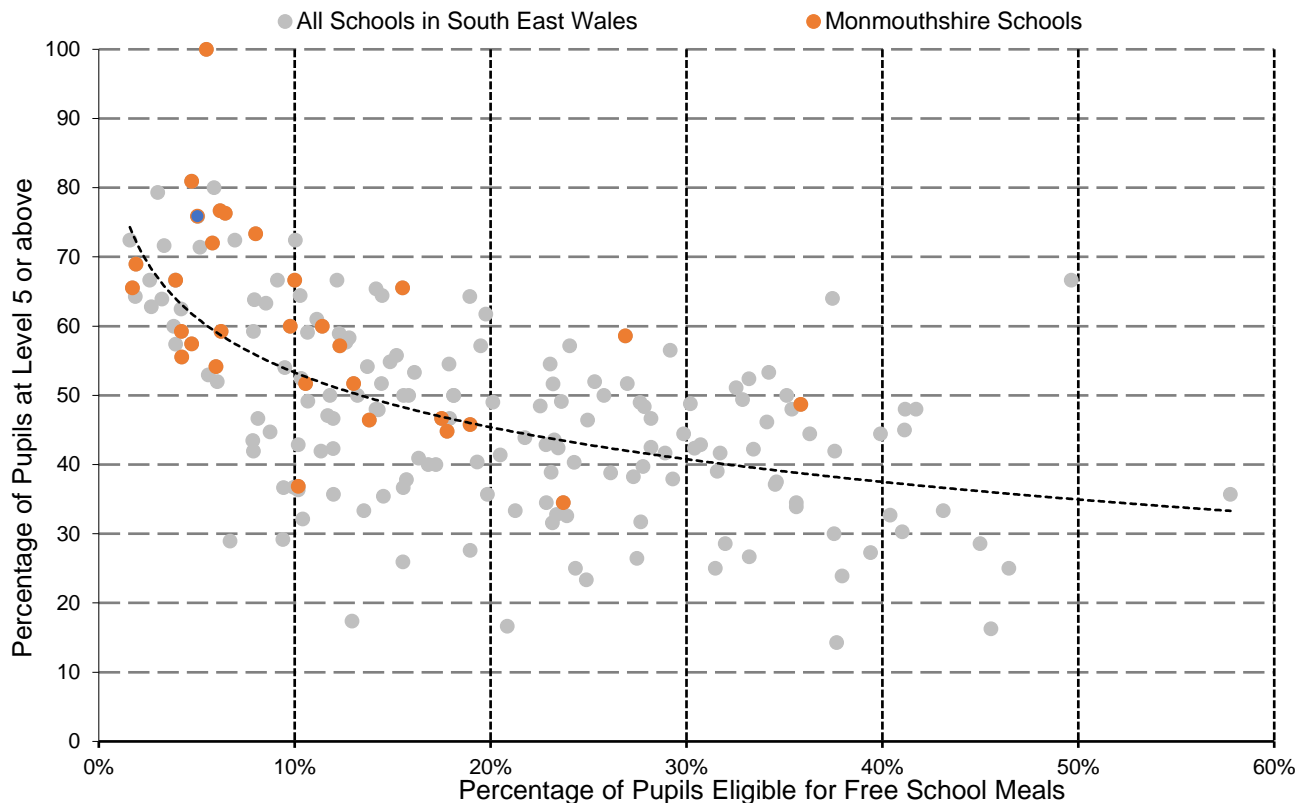


English

Percentage of pupils achieving level 4+



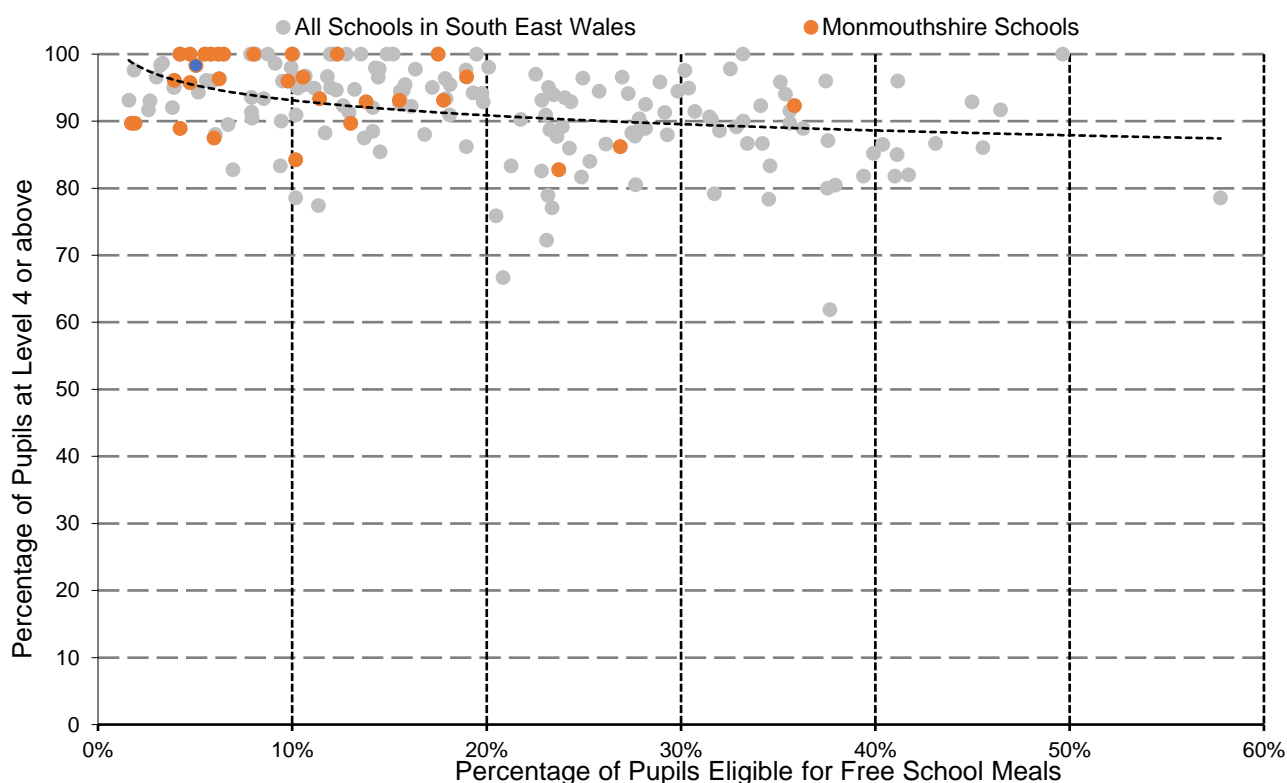
Percentage of pupils achieving level 5+



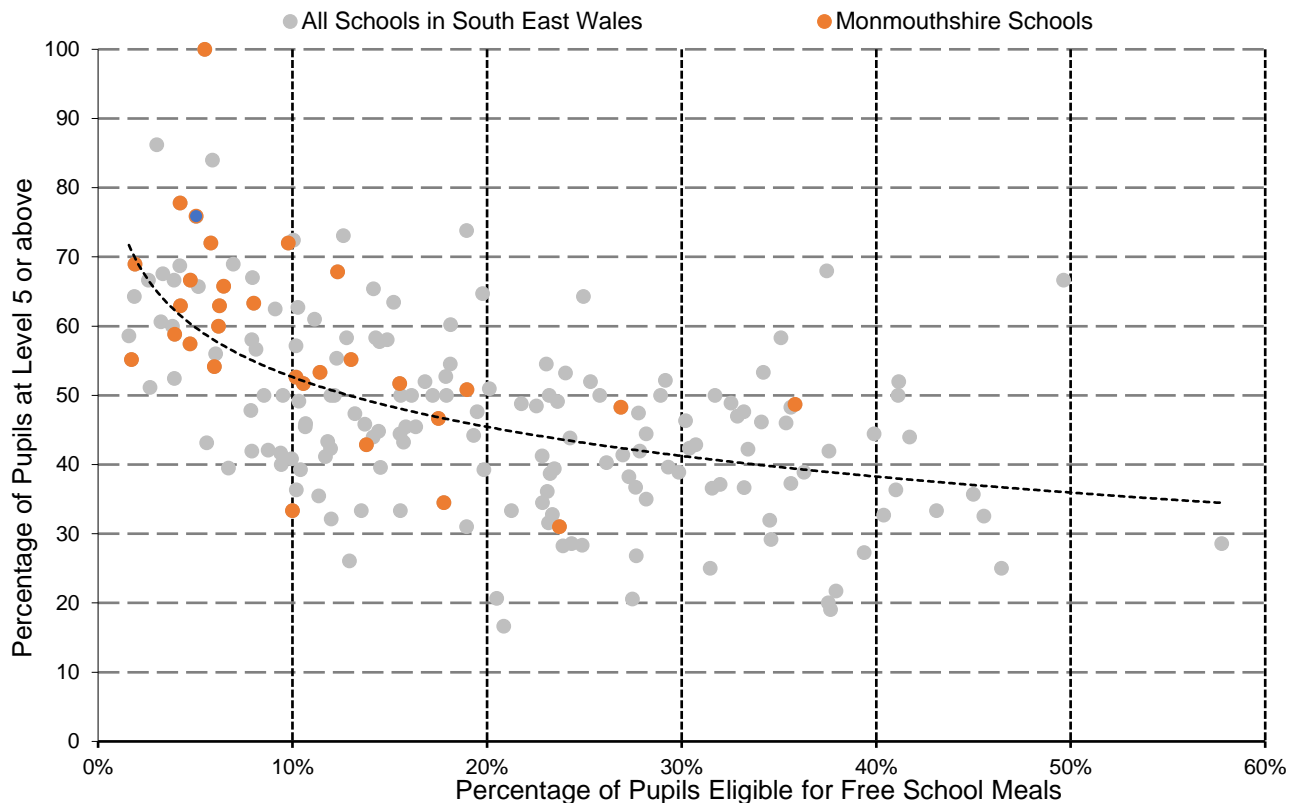
Key Stage 2 – English – Summary Analysis (ALL MONMOUTHSHIRE SCHOOLS)

- Overall performance at Level 4+ (L4+) is above the region as a whole, particularly for those schools with <20% FSM.
- Overall performance at Level 5+ (L5+) is also above the region as a whole.
- There are however 2 schools, with FSM in the range 0-30%, where performance is below expectation, but not to a significant extent.

Key Stage 2 – Mathematics - Percentage of pupils achieving level 4+



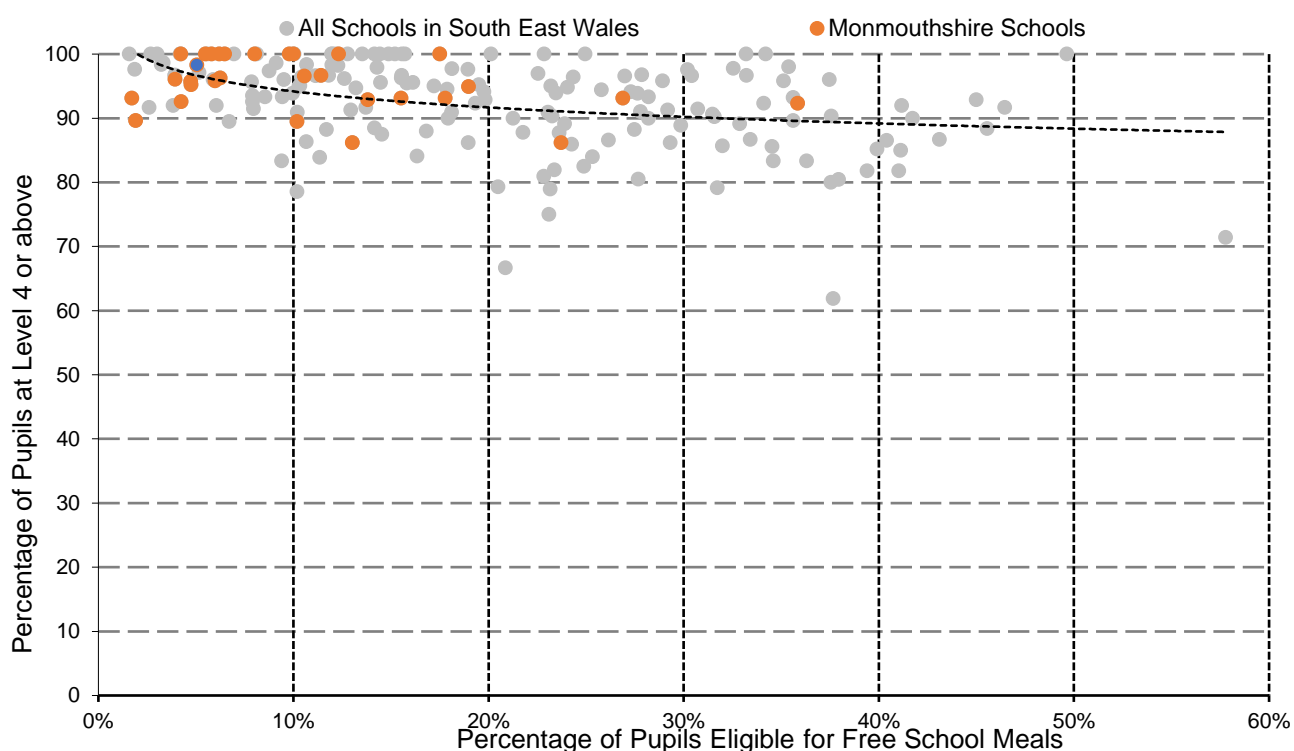
Percentage of pupils achieving level 5+



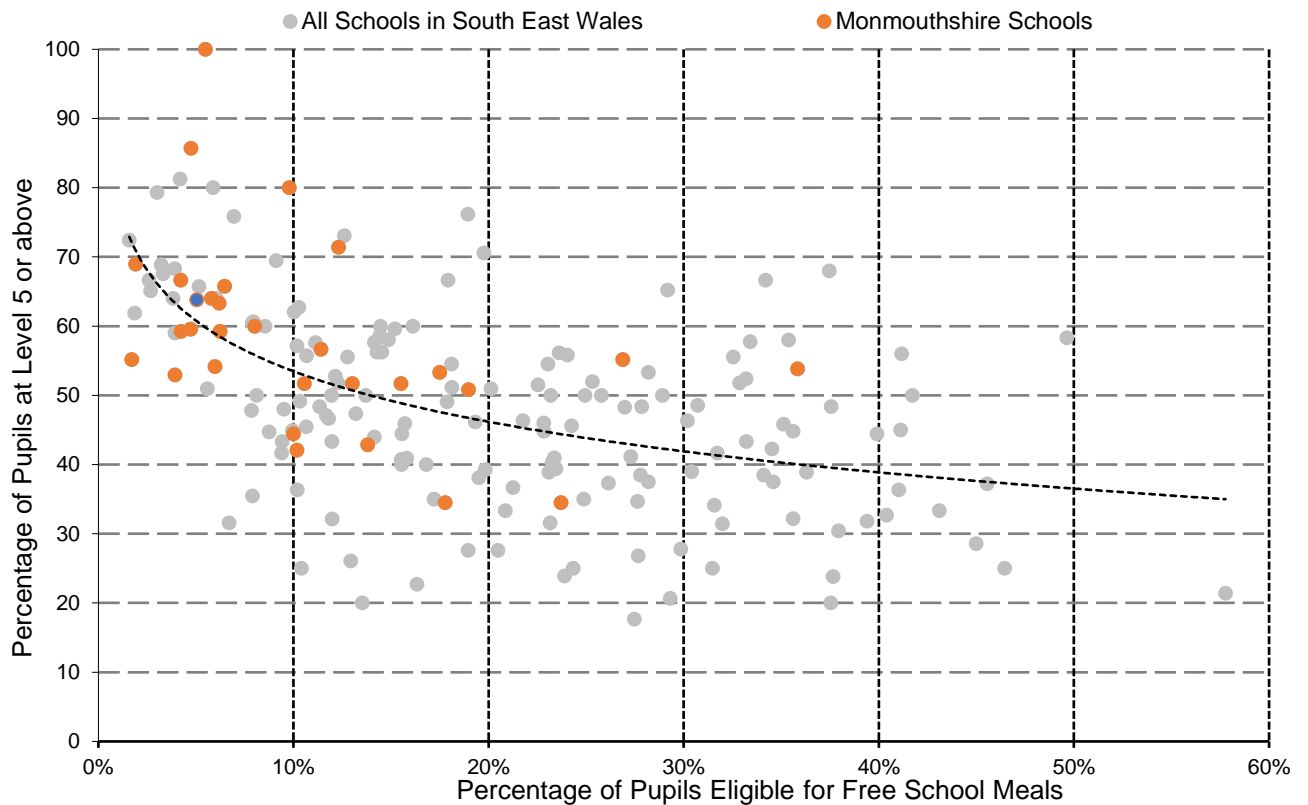
Key Stage 2 – Mathematics – Summary Analysis (ALL MONMOUTHSHIRE SCHOOLS)

- Overall performance at Level 4+ is above the region as a whole, particularly for those schools with <20% FSM.
- Overall performance at Level 5+ is also above the region as a whole.
- There are a few schools, with FSM in the range 0-30%, where performance is below expectation, one to a significant extent.

Key Stage 2 – Science - Percentage of pupils achieving level 4+



Percentage of pupils achieving level 5+



Key Stage 2 – Science – Summary Analysis

(ALL MONMOUTHSHIRE SCHOOLS)

- Overall performance at Level 4+ is above the region as a whole, particularly for those schools with <20% FSM.
- Overall performance at Level 5+ is also above the region as a whole.
- There are however a few schools, with FSM in the range 0-30%, where performance is below expectation, but not to a significant extent.